



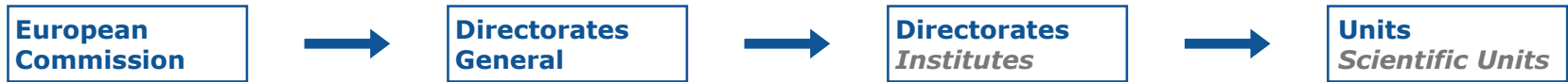
Breast cancer screening and early detection: the European Commission Initiative on Breast Cancer - ECIBC

Donata LERDA

Joint Research Centre
*The European Commission's
in-house science service*

Joint
Research
Centre

The Joint Research Centre within the European Commission



- Established 1957.
- 7 institutes in 5 countries.
- > 3000 staff (21% for administration) in 2013.
- > 1500 scientific publications in 2013 and many tools and databases (~150).
- Budget: €330 million annually, plus 15% max earned income.



JRC is not a POLICY DG but is the in-house science service of the EC

Institute for Health and Consumer Protection (IHCP)



Director

K. Maruszewski

Genetically Modified
Organisms

Nanotechnology

Food and Consumer Products

Chemical Assessment &
Alternatives to Animal Testing

Public Health
Policy Support
UNIT



C. Nicholl

Public Health

- **Healthcare Quality**
- Nutrition
- Disease registries
- Behavioural Sciences
- Medical Devices

WHO? Healthcare Quality Team

To provide support to European policies and to European countries for the development and implementation of a **common HQ framework for improving quality of care**. European guidelines (evidence), standards, quality assurance schemes can reduce inequalities and risks related to increased patients' mobility.

PROFILES:

Quality Assurance – accreditation – auditing, Healthcare quality

Epidemiology, Biostatistics, Public health

Guidelines development and adoption, Literature review

Radiology (BC screening and early diagnosis), Population-based cancer screening programmes

WHAT?



**Evidence-based
healthcare**

Person-centred care

**Essential requirements
throughout
Europe**

WHAT? CURRENT PROJECT: **ECIBC**

AIM: To provide women evidence-based and person-centred care for **all stages of breast cancer care**, via:

- 1 - the establishment of a set of evidence (**the new European Guidelines for screening and diagnosis** + existing guidelines for other stages)
- 2 - based on such a set, the implementation and monitoring (auditing) of a set of quality standards (**the voluntary European Quality Assurance scheme for Breast Cancer Services**)

DELIVERABLES: **web-based, evidence-based guidelines for screening and diagnosis**, platform of guidelines for the other stages and aspects, QA scheme pilot, concepts for trainings related to the outcomes, ECIBC web-hub

WHY THE EUROPEAN COMMISSION INITIATIVE ON BREAST CANCER?

Breast cancer is still the most deadly cancer affecting women

Many guidelines are available (*European Institutions are active since 1987*)

Various quality schemes are applied in Europe

HOW? ECIBC: *Method*

Via Commission Implementing Decision of 1 December 2011 **JRC is asked to coordinate the European Commission Initiative on Breast Cancer**

METHOD: experts/stakeholders involvement - *draft* proposals – open consultation – consensus
(TRANSPARENCY – INCLUSIVENESS – PEER EVALUATION)

JRC provides:

- Sustainable / long-term organisational framework (**WGs, GLs life-cycle**)
- Transparent, neutral and independent platform for stakeholders involvement (**diverse opinions con talk to each other**)
- A service for consultation and feed-back collection on Initiative's documents (**all inputs are carefully evaluated and transparently managed**)



For more information

Institutional JRC Website

http://ihcp.jrc.ec.europa.eu/our_activities/public-health/cancer_policy_support

(the future ECIBC web-hub is planned to be developed during 2015-2016)

Email

ECIBC: jrc-cancer-policy-support@ec.europa.eu